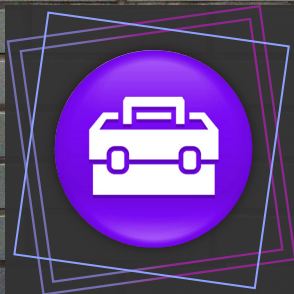


CORRECTIVE COLOUR TOOLBOX





UN-DO-GOO

> pH 9 SHAMPOO

WHAT IT IS:

Gentle **RESIN REMOVER** that effectively **ELIMINATES PRODUCT BUILDUP**

FEATURES // BENEFITS:

- Sweeps away styling product buildup for a deep cleaning detox
- Gently eliminates grease and grime without stripping natural oils
- Transformative formula targets impurities to deliver a pristine clean
- Offers a powerfully-effective wellness alternative to harsh clarifiers

"For clients with extreme product buildup coated on the hair, shampoo with **UN-DO-GOO** then bag and process under heat for 10 minutes before rinsing thoroughly."

— ANTHONY BARNHILL, LEAD ARTIST // EDUCATOR
@ANTHONY.BARNHILL



PRODUCT BUILDUP
REMOVER



MALIBU MAKEOVER SERVICE

STEP ONE // CRYSTAL GEL:

- Powerfully effective innovation removes brassy, ashy and muddy discoloration
- Gently draws out buildup from medications and damaging hard water minerals
- Advanced antioxidant complex delivers immediate relief that soothes dry scalp
- Formulated with the purest, most potent form of Vitamin C for maximum benefits

STEP TWO // MIRACLE REPAIR:

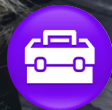
- Sweetly scented cult classic dramatically restores dyed, dried, fried strands
- Cardinal cocktail of conditioning agents enriched with Quinoa and Flax Protein
- Carefully-crafted complex deeply penetrates to strengthen strands from within
- Detangles for improved manageability and ultra-soft strands with high shine

DETOX
TREATMENT



HAIR REHAB FOR:

- >>> COLOUR FADE
- >>> DISCOLORATION
- >>> DULLNESS // DRYNESS
- >>> SPLIT-ENDS // BREAKAGE
- >>> THERMAL DAMAGE



HAIR BY PLATFORM ARTIST // EDUCATOR CHAD STOKES @CHADSTOKESHAIR



"Starting with a **CLEAN CANVAS** is the fundamental key to success for every **CORRECTIVE COLOUR** service."
— **MISSY PETERSON** // MALIBU C PRO
EDUCATION AND ARTISTIC DIRECTOR

CANVAS PREP

CRYSTAL GEL

FEATURES // BENEFITS:

- >>> GENTLY REMOVES COLOUR-BLOCKERS TO PRIME FOR SUCCESS
- >>> OPTIMIZED TO DELIVER SOOTHING RELIEF FROM SCALP IRRITATION
- >>> DRAWS OUT DAMAGING BUILDUP FROM MINERALS AND MEDICATION
- >>> EFFECTIVELY ELIMINATES DISCOLORATION (BRASSY / ASHY / MUDDY)

ACTIVATION // APPLICATION:

- >>> COMBINE CRYSTALS WITH WARM WATER (2 oz) AND MIX WELL
- >>> SECTION & APPLY FRESHLY-ACTIVATED CRYSTAL GEL TO WET HAIR
- >>> BAG AND PROCESS UNDER HEAT FOR A MINIMUM OF 10 MINUTES
- >>> SHAMPOO, THEN RINSE THOROUGHLY AND PROCEED WITH SERVICE



WHEN YOU NEED A
QUICK FIX ...

FOR THE **UNEXPECTED**



WHAT IT IS:

Powerful BLEACH CAP ALTERNATIVE optimized for RESULTS AT THE BOWL

FEATURES // BENEFITS:

- >>> Instantly delivers a gentle "QUICK FIX" for unexpected colour disasters
- >>> Powerful innovation removes tone and effectively preserves integrity
- >>> Dual-action complex draws out colour-blockers and mineral deposits
- >>> Professional tool primes hair for colour when reapplication is needed



"For extra removal, pop the client under heat for up to 10 minutes and follow with **UN-DO-GOO > pH 9 SHAMPOO.**"

— ANTHONY BARNHILL, LEAD ARTIST // EDUCATOR
@ANTHONY.BARNHILL



>>> PRO TIP

“CPR can be processed more than once for **UP TO 3 LEVELS** of oxidative colour **REMOVAL WITHOUT DAMAGE.**”

— NICOLE EMILIANI, PLATFORM ARTIST // EDUCATOR
@NICOLE_EMILIANI

OXIDATIVE COLOUR REMOVER

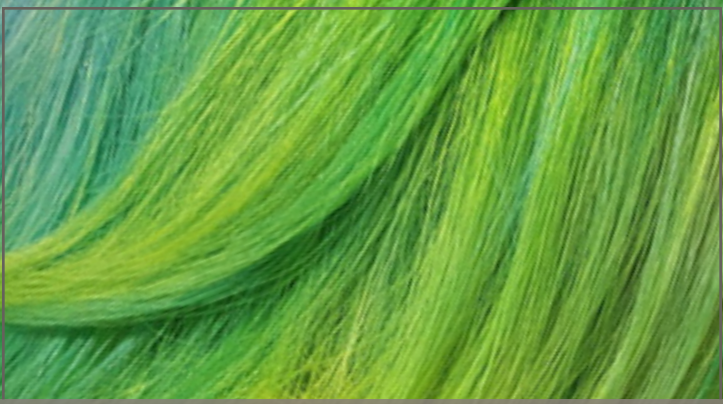
CPR



>>> FAST FACTS

REMOVES OXIDATIVE COLOUR	✓
REMOVES METALLIC MINERALS	✓
LIFTS OXIDATIVE COLOUR	✓
LIFTS NATURAL PIGMENT	✗
MIXES WITH WATER (4 oz)	✓
PROCESSED UNDER HEAT	✓
FORMULATED WITHOUT BLEACH	✓
GENTLE ENOUGH TO REPEAT	✓





>>> PRO TIP

“For **OPTIMAL CONSISTENCY**, always start with your Water or Developer, and **MIX DDL CRYSTALS** into the solution.”

— KELLY STANLEY, MALIBU C PRO EDUCATOR
@KSTANLEYVMN

NON-OXIDATIVE COLOUR REMOVER

DDL



>>> FAST FACTS

LIFTS NON-OXIDATIVE COLOUR	✓
LIFTS OXIDATIVE COLOUR	✓
LIFTS NATURAL PIGMENT	✓
MIXES WITH WATER // DEVELOPER	✓
FORMULATED WITHOUT AMMONIA	✓
CREAMY, NON-DRIP CONSISTENCY	✓
MAY ALSO BE USED TO BALAYAGE	✓
PROCESSED UNDER HEAT	✗



OXIDATIVE **CONTROL**

ACTIVATION // APPLICATION:

- >>> POUR CRYSTALS INTO AN APPLICATOR BOTTLE WITH WARM WATER (2 oz)
- >>> SHAKE TO MIX THOROUGHLY AND DISSOLVE CRYSTALS, THEN SET ASIDE
- >>> APPLY AT THE BOWL IMMEDIATELY FOLLOWING LIGHTENING PROCESS
- >>> MASSAGE INTO THE HAIR & SCALP FROM ROOTS-TO-ENDS, THEN RINSE

CRYSTAL **GEL**

>>> PRO TIP

"Massage **CRYSTAL GEL** into the hair after lifting to **CONTROL OXIDATION** and also **PREP** hair for more **EVEN TONING.**"

- CHAD STOKES PLATFORM ARTIST // EDUCATOR
@CHADSTOKESHAIR



BACKBAR COCKTAIL MENU

CONCENTR8 MIXER HAPPY HOUR



LIBATIONS LIST	REHYDR8	REHABILIT8	ILLUMIN8
BREAKAGE	2 PUMPS	3 PUMPS	1 PUMP
CHEMICALLY DAMAGED	1 PUMP	1 PUMP	1 PUMP
COLOUR TREATED	1 PUMP	1 PUMP	1 PUMP
DRY // BRITTLE	3 PUMPS	2 PUMPS	1 PUMP
DULL // LACKS SHINE	1 PUMP	-	2 PUMPS
FRIZZY	3 PUMPS	1 PUMP	3 PUMPS
OVERLY POROUS	2 PUMPS	3 PUMPS	1 PUMP
SPLIT ENDS	2 PUMPS	3 PUMPS	1 PUMP
TANGLED	3 PUMPS	-	1 PUMP
THERMAL DAMAGED	2 PUMPS	2 PUMPS	3 PUMPS





MALIBU®
PROFESSIONAL