



# INTENSE

## NEUTRAL SERIES INTENSE HUES FOR THE PERFECT BLEND

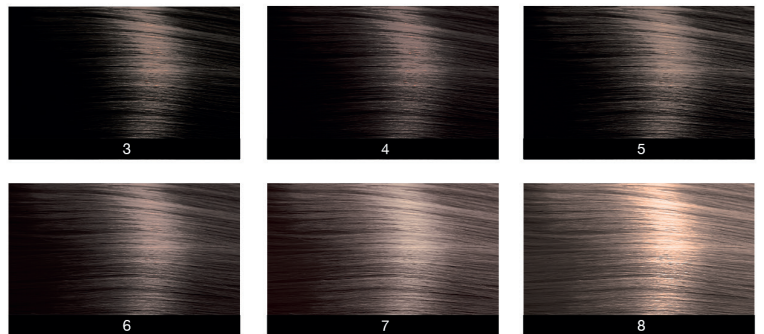


Our new Intense Neutral series and 13 Volume (4%) Cream Developer were specially created to offer up to 50% white hair blending. These rich shades were calibrated to deliver neutral results.

### BASE



### SHADES



### DEVELOPER

Our new 13 Volume (4%) Cream Developer was specially formulated to be mixed with the intense neutral series to offer up to 50% white hair blending. It offers the perfect consistency for bowl and brush applications.

### WHITE HAIR BLENDING

- For white blending up to 30%, a Neutral or Neutral Brown shade must be included in the formula at a 1:1 ratio with a Calura 7 volume developer (2%).
- For white blending up to 50%, an Intense Neutral shade must be included in the formula at a 1:1 ratio with Calura Gloss Cream 13 volume developer (4%).