



Dermapenworld™

HERITAGE

EXO-GROW COLLECTION™



Our Heritage

From microneedling pioneers to skincare and now hair care innovators.

- Born from Australian ingenuity, **DermapenWorld™** changed the aesthetic industry in 2010
- World's first automated microneedling device—**Dermapen™**
- Invested millions in R&D, leading to the creation of **Dermapen 4™**: the first fully digital, Bluetooth-enabled microneedling device.

Today, **DermapenWorld is the global leader in microneedling,**

- Over 5 million treatments
- Performed in 15,000+ clinics
- Across 80 countries

Our results-driven **Dp Dermaceuticals™** skincare range complements every treatment, offering targeted, science-backed solutions.

Now, we're expanding beyond skin

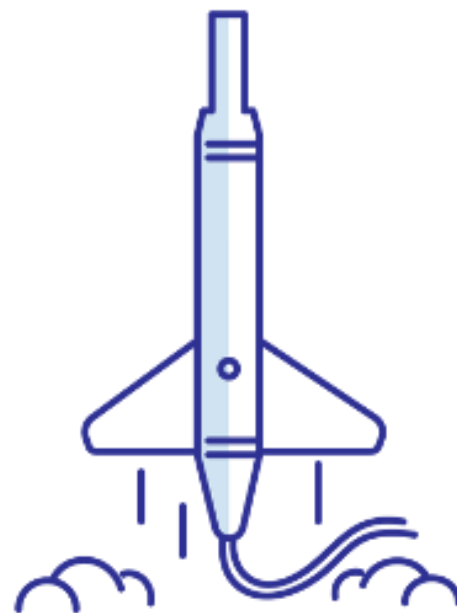
- **EXO-GROW™**, our breakthrough in advanced hair care.

DERMAPENWORLD

EXO-GROW COLLECTION™



**1976
Founded**



**2010
Invented
Original
Dermapen™**



**6 Million +
Dermapen
Treatments™ Worldwide**



**100+
Countries
Representation**



**20,000+
Authorised
Clinics Globally**

INDUSTRY LEADER

EXO-GROW COLLECTION™

Introducing a performance-driven regeneration portfolio designed for the salon, spa, and barbershop channel:

- **DermapenWorld™**

Global pioneers in microneedling for clinic and home use.

- **Dp Dermaceuticals™**

A science-driven skincare line engineered to complement microneedling treatments and medical-grade LED with targeted, results-based formulas.

- **EXO-GROW™**

A breakthrough bioscience solution for scalp care and hair loss. Patented Exosome-powered scalp restoration system targets follicle regeneration



SYNERGY OF SOLUTIONS

EXO-GROW COLLECTION™

DermapenWorld™ pioneered the first automated microneedling device and treatment protocols, setting the gold standard in skin rejuvenation.

EXO-GROW™ and Dp Dermaceuticals™ deliver a synergistic system where each component enhances the effectiveness of the next.

- Microneedling opens microchannels, exosomes drive cellular regeneration.
- LED light stimulates circulation and recovery—all working together to accelerate visible results.

Our **Synergy of Solutions** sets us apart from single-modality systems by offering a full-circle approach to beauty and wellness regeneration.



OUR VALUES

EXO-GROW COLLECTION™

Make a difference

We are dedicated to innovation and ensuring that every aspect of our work has a meaningful impact on people's lives.

Build trust through integrity

We thrive on a foundation of being pioneering, original and trusted. We strive for a culture that is adaptable, honest, and respectful.

Dedicated to excellence

As market leaders, we inspire loyalty through being accountable and our commitment to high standards and perseverance.

One united team

We are connected, collaborative, proud and unified to meet our common goals.



EXO-GROW™

DERMAPENWORLD™

EXO-GROW COLLECTION™
BY DP DERMACEUTICALS™



Dermapenworld™



THE BRAND

EXO-GROW COLLECTION™

REVOLUTIONISE HAIR GROWTH

EXO-GROW COLLECTION™

It's time to change the way you think about scalp health and hair loss

Introducing the EXO-GROW Collection™

Clinically formulated to address

- Reduced follicle density
- Excessive shedding
- Progressive hair thinning

This comprehensive hair care system supports

- Scalp health
- Strengthens hair fiber
- Promotes visibly denser more resilient hair growth

EXO-GROW Collection is a targeted, professional-grade range for fine and thinning hair—designed to complement your services and elevate your salons and clinic's retail offerings.

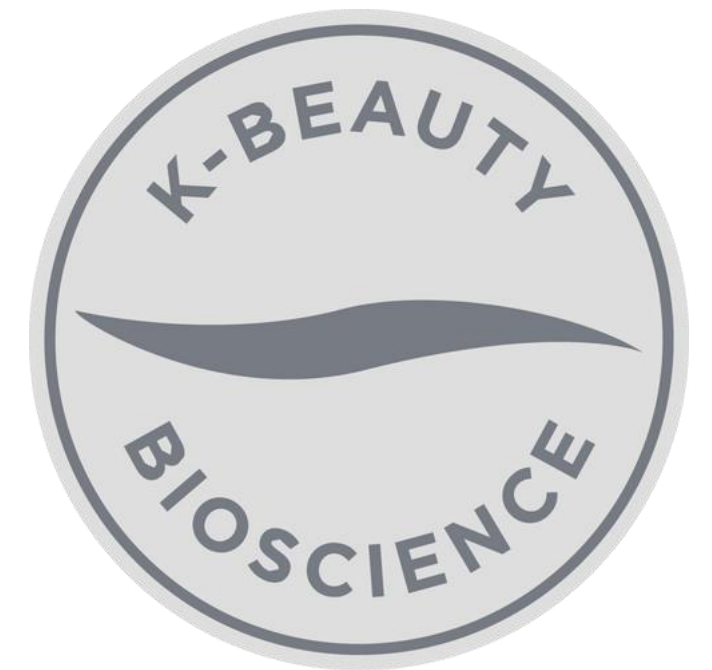


INDUSTRY TREND

EXO-GROW COLLECTION™

K-Beauty Leads the Next Beauty Wave

- Global K-Beauty market valued at **\$10B+**—projected to grow rapidly
- Known for **science-forward, gentle-yet-potent**, and **innovative delivery systems**
- Consumers trust K-Beauty for **skincare...** now they're seeking the **same for scalp care**
- EXO-GROW is a **pioneer in K-Beauty Haircare**, merging high-efficacy with modern aesthetics



EXO-GROW COLLECTION

EXO-GROW COLLECTION™

EXO-GROW Exosome Core Technology merges bioactive botanicals with advanced stem cell science to support follicle regeneration and reduce inflammation.

- Formulated to clinical-grade standards
- Vegan shampoo and conditioner
- Cruelty-free, free from sulfates, parabens, and harsh chemicals
- Dermatologist-endorsed

EXO-GROW ComplexA Technology, rooted in **K-Beauty Bioscience**, targets follicle regeneration and treats scalp conditions at a deeper level than conventional hair care.



BRANDING

EXO-GROW COLLECTION™

The brand reflects confidence, clarity, commitment, compassion, and credibility across all communications.

Design is sleek and minimalist, with clean lines and bold typography.

The colour palette is predominantly monochromatic—black packaging accented by modern metallic silver elements.

Branding is visually aligned with the **DermapenWorld™** brand (blue and white) and complements the EXO-SKIN™ sister range (white and silver).

The identity upholds the brand's reputation for quality and innovation, with messaging that is forward-thinking, sophisticated, and creatively driven.



THE MESSAGE

EXO-GROW COLLECTION™

YOU WILL BELIEVE

Regain Your Confidence

The EXO-GROW Collection™ delivers bold, results-driven messaging centered on strength, innovation, and success. Rooted in quality and empowerment, it speaks directly to the needs of both salon professionals and individuals experiencing thinning hair.

Compassionate Care

Thinning hair impacts more than appearance—it affects self-esteem. EXO-GROW offers more than a solution; it represents empathy and support throughout the hair restoration journey.

Empowerment Through Innovation

Powered by advanced anti-ageing technology, EXO-GROW hair care. It restores not only fuller, healthier hair, but also confidence and vitality—helping individuals feel like themselves again.



EXO-GROW™

Regain. Retain. Maintain.

**YOU
WILL
BELIEVE**

TARGET MARKET

EXO-GROW COLLECTION™

PROFESSIONALS	CONSUMERS
<ul style="list-style-type: none">• Trichology Centers• Hair Loss Clinics• Hair Transplant Clinics• Hair & Beauty Spa's• Hair Salons• Barbershops• Freelance Hair Stylists	<ul style="list-style-type: none">• Alopecia• Genetic Pattern Baldness (Men & Women)• Men with hair loss (ageing)• Post-natal women (ageing)• Peri-Menopause and Menopause (women)• Cancer patients undergoing/gone chemotherapy• Nutritional deficiencies• Hair damage (heat styling, chemical treatments)• Thyroid disorders (hypothyroidism or hyperthyroidism)• Greyness



THE COLLECTION

EXO-GROW COLLECTION™

EXO-GROW™ SCALP MASK

EXO-GROW COLLECTION™

The ultimate anti-inflammatory scalp detox.

A potent cocktail of anti-inflammatory and hair-boosting ingredients, provides the ideal environment for strong, healthy-looking and abundant hair. Patented bio-enzymes remove harmful skin cells and excess oil leaving the scalp and hair stronger, cleaner and more elastic.

Purpose:

- Advanced anti-inflammatory scalp detox designed to support optimal scalp health and hair vitality

PERFORMANCE INGREDIENTS:

Ceramide ComplexA, ComplexA of 17 Amino Acids, Sophora Japonica, Natural Bio-Enzymes, PDRN Polynucleotides



EXO-GROW™ SHAMPOO

EXO-GROW COLLECTION™

Helps reduce hair fall, improves scalp and follicles.

Gently cleanses, boosts scalp & follicle condition. Anti-inflammatory, relieves itching & discomfort.

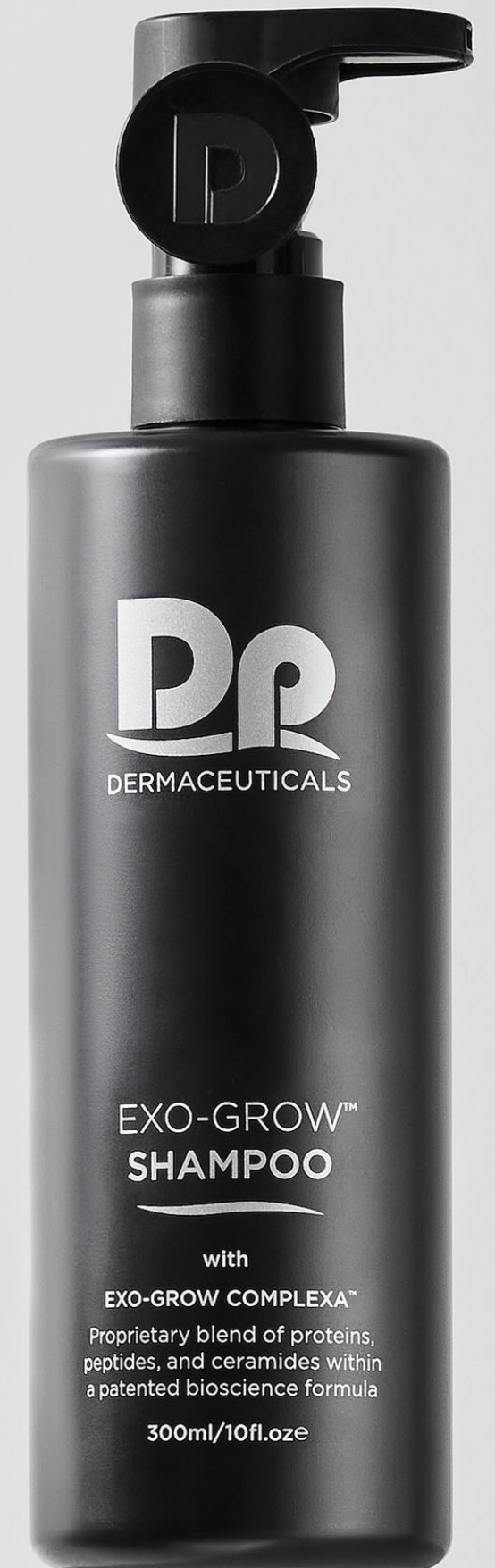
Helps prevent hair loss and hair follicle shrinkage by boosting the scalp's antioxidant levels and rejuvenates the damage caused by thinning hair.

Purpose

- Helps reduce hair fall and prevent follicular miniaturisation

PERFORMANCE INGREDIENTS:

Ceramide ComplexA, 23-ingredient Plant ComplexA, Pea Protein, Hauso - Multiflorum Root Water, Copper Peptides, Amino Acids, Sophora Japonica Callus Culture Extract,



EXO-GROW™ CONDITIONER

EXO-GROW COLLECTION™

Nourishes and boosts scalp and follicle condition.

Protects and smooths damaged and rough hair cuticle layers. Restores nourishment to hair damaged from heat or colouring.

Nourishes scalp without clogging pores creating an environment where hair can thrive.

Purpose

- Nourishes the scalp and supports optimal follicle function

PERFORMANCE INGREDIENTS:

Ceramide ComplexA, 23-ingredient Plant ComplexA, Pea Protein, Peptide ComplexA, Hauso-Multiforum Root Water, Hydrolysed Collagen & Keratin ComplexA



EXO-GROW™ HAIR TONIC

EXO-GROW COLLECTION™

This tonic promotes a healthy hair cycle.

Reclaim a fuller head of hair from the roots up. This potent formula works to invigorate hair follicles and foster a healthy growth cycle. The enhanced bio formula includes the worlds only immune tolerant substances, so they increase in effectiveness with each application.

Purpose:

- Supports a healthy hair growth cycle and helps restore visible hair density

PERFORMANCE INGREDIENTS:

Exosome Technology & Functional Growth Factors, Proteins & Peptides, ComplexA of Amino & Ceramide Acids, Sophora Japonica Callus Culture Extract, Polynucleotides



EXO-GROW™ HAIR TONIC

EXO-GROW COLLECTION™

Application:

- Apply to dry scalp, focusing on areas with thinning or hair loss
- Massage gently for 5-10 minutes to enhance absorption

Recommended Use:

- For daily use to support consistent follicular stimulation and hair cycle optimisation

Key Benefits:

- Formulated to invigorate hair follicles and reactivate dormant growth phases
- Contains the world's only immune-tolerant exosome-based actives, enhancing effectiveness with continued use
- Promotes fuller, thicker-looking hair from the roots



EXO-GROW™ LASH & BROW SERUM

EXO-GROW COLLECTION™

Clinically proven to produce thicker, longer looking lashes and brows in as little as 4 weeks. Enhances lashes by 61%.

Powered by EXO-GROW™ Peptide ComplexA to nature and revitalize the hair root and support more density and volume. No silicones, parabens, phthalates, harmful sulphates, prostaglandin, SLS, SLES or artificial fragrances or colorants.

Purpose:

Designed to promote thicker, longer-looking lashes and brows.

PERFORMANCE INGREDIENTS:

Exosome Technology (IT-HLA-G EXO), Peptide (13) and Amino ComplexAs, Bio Protease Enzymes, Sophora Japonica, Edelweiss Extract



COLOUR RECHARGE SHAMPOO BAR

EXO-GROW COLLECTION™

Using natural ingredients, vegetable polyphenols are densely absorbed on the strands to return grey hair back to its natural colour.

By combining Gallic and Tannic Acid, vegetable polyphenols are densely adsorbed on the strands. When combined with oxygen, oxidation occurs, and grey hair is returned to its natural colour.

Perfect for beards and shaving.

Purpose:

Reduce the appearance of grey hair.

PERFORMANCE INGREDIENTS:

Gallic Acid and Tannic Acid, Charcoal, Sophora Japonica and Edelweiss, Soybean Protein, Black Current, Blackberry, Eggplant, Blueberry, Cermamide & Peptide ComplexAs.



DERMAPEN HOME™

EXO-GROW COLLECTION™

DERMAPEN HOME™ is a precision microneedling device. The controlled micro-injuries create channels for deeper absorption of the EXO-GROW™ HAIR TONIC.

Safe and easy to use, it delivers clinical-grade results from the comfort of home.

Purpose:

To stimulate the scalp to promote hair growth, reduce shedding and improve follicle function.

Key Benefits

- Stimulates blood flow to the scalp
- Activates dormant hair follicles
- Enhances delivery and absorption of EXO-GROW™ HAIR TONIC
- Supports healthier, thicker hair growth over time



DERMAPEN HOME™

EXO-GROW COLLECTION™

Usage Instructions

- Begin with clean, dry hair and scalp
- Disinfect the Dermapen HOME™ tip before each use with isopropyl alcohol
- Disinfect the working area using Dp Dermaceuticals CLINIPREP+
- Make sure the device is charged or properly powered

Microneedling Procedure

- Divide your scalp into sections (crown, front, sides)
- Apply EXO-GROW™ HAIR TONIC in sections
- Gently press the Dermapen HOME™ tip onto the scalp
- Glide the device in horizontal, vertical, and diagonal motions within each section.
- Avoid excessive pressure—gentle, even passes are sufficient

Recommended use:

- Use 1-2 times per week for best results
- Visible improvements typically occur after 4-6 weeks of regular use



A high-contrast, black and white close-up photograph of a woman's face. Her eyes are looking directly at the camera, and her hair is blonde and slightly tousled. The lighting is dramatic, highlighting the texture of her skin and hair.

NEW PRODUCT DEVELOPMENT

EXO-GROW COLLECTION™

EXO-SIP&SUPP™

EXO-GROW COLLECTION™

A holistic approach to hair, skin and nail rejuvenation.

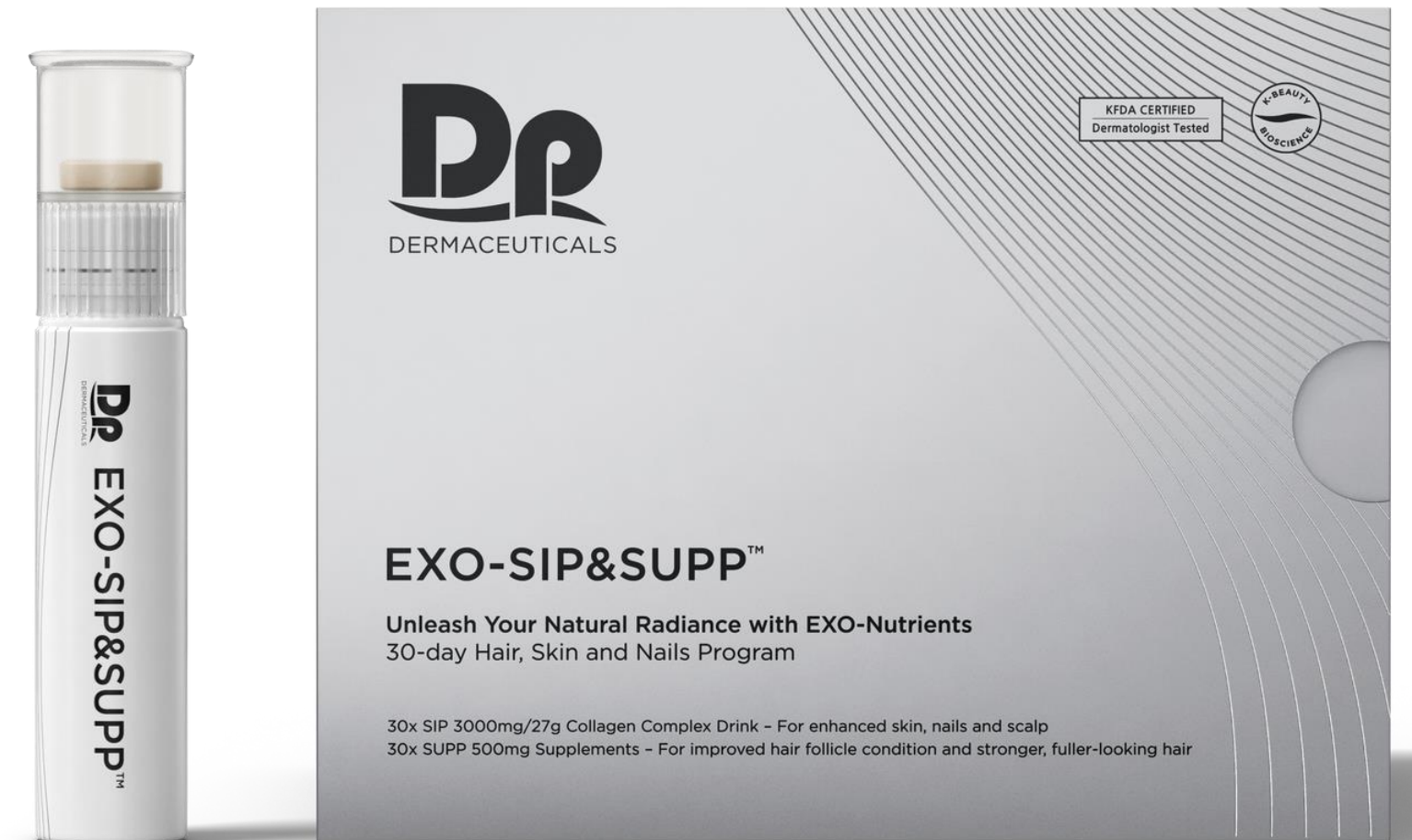
Contains an active blend of essential amino acids to promote strong peptide and protein structure. Vitamins B, C and E complexes, including Biotin, Vitamin C and Zinc, are expertly encapsulated in HylaFuse for encapsulation and a time-release delivery.

Purpose:

A powerhouse of antioxidants and redox scavengers to strengthen, enhance skin, hair and nail quality.

PERFORMANCE INGREDIENTS:

Marine Collagen Peptides, Vital Amino Acids, Hyaluronic Acid, Niacinamide, Vitamin Complexes of B, C, E, and Fruit and Vegetable Extracts including White Tomato.



EXO-SIP&SUPP™

EXO-GROW COLLECTION™

Recommended Use:

- Dosage: Take one 30ml vial daily
- Administration: Consume directly or mix with water or juice.
- Consistency: For optimal results, incorporate into your daily routine

Key Benefits:

- Promotes hair growth supporting the natural hair growth cycle, reducing shedding and encouraging thicker, healthier hair.
- Enhances skin health providing antioxidants and that contribute to a radiant and youthful complexion.
- Strengthens and fortifies nails, reducing brittleness and promoting growth.



nutrients

DP SCAN™

EXO-GROW COLLECTION™

A New Paradigm of Digital Healthcare

Dp SCANs AI Solution Analyses Skin, Scalp, Hair

AI-Powered Skin & Scalp Analysis in Seconds

- Supports 5 Sensor Algorithms with One Data Capture and Snap-Shot Multi-Analysis
- 20x Optical & UV-A Camera captures high-resolution images of scalp and skin conditions with clinical clarity.
- All in One Platform Customer Management Journey with Analysis → Protocol Prescription → History Management → Product Recommendation
- Customised AI for Personalised Protocol Recommendations and product recommendations for individual skin, scalp or hair concerns
- Back End Analytics with a professional dashboard
- Convenient and Safe Data Storage, GDPR Compliant



EXO-GROW™ L.E.D. LASER CAP

EXO-GROW COLLECTION™

Clinically Proven Light Therapy for Hair Regeneration

Beneficial for reducing hair thinning and shedding as it stimulates hair follicles, enhances cellular activity, and promotes hair growth.

Clinical studies have shown that this wavelength can improve hair density and thickness, making it an effective non-invasive treatment for hair loss.

EXO-GROW™ L.E.D. LASER CAP can be used with or without the use of topical **EXO-GROW™ HAIR TONIC**. Red Light LED has been clinically proven to enhance the delivery of topicals.

Purpose:

A non-invasive, at-home treatment specifically designed to combat hair thinning and shedding. This medical-grade device utilises advanced red light and laser therapy to rejuvenate hair follicles, improve scalp health, and support natural hair regrowth.



EXO-GROW™ L.E.D. LASER CAP

EXO-GROW COLLECTION™

Recommended Use:

- Apply EXO-GROW™ HAIR TONIC to the scalp and massage
- Turn on the device and place it securely on your head and adjust for a snug, comfortable fit
- Use as directed, typically for 10 minutes
- Use 3-4 times per week for optimal results

Key Benefits:

- Dual-Wavelength Technology combines 200 Red Light LEDs and 72 Lasers Light (650nm) to target hair follicles
- A non-invasive & safe, drug-free alternative to treat hair loss
- Stimulates dormant hair follicles to promote new growth
- Enhances cellular activity with Low-Level Light Therapy (LLLT) increases cellular metabolism in the scalp promoting hair density & thickness
- Optimises topical absorption as the red and laser light enhance transdermal delivery of topical solutions for synergistic results





THE EMOTION

EXO-GROW COLLECTION™

EMOTIONAL CONNECTIVITY

EXO-GROW COLLECTION™

Empowering Confidence Through Science-Backed Hair Regeneration

- More Than a Cosmetic Concern
 - Hair loss often affects emotional wellbeing, self-esteem, and quality of life
 - Individuals may experience a loss of identity, confidence, and self-assurance
- Psychological Repercussions
 - Clinical studies associate hair loss with increased levels of anxiety and reduced self-worth

Our Mission: Science That Speaks to the Soul

- Empathy-Led Innovation
 - Our approach begins with understanding the emotional toll of hair loss
 - We create solutions that restore not only the scalp—but the confidence beneath it
- Identity Reclamation
 - Hair restoration isn't just about regrowth—it's about rediscovering self
 - Our products empower individuals to feel like themselves again

THE PSYCHOLOGICAL IMPACT

EXO-GROW COLLECTION™

- **Emotional Support is Essential**
 - Treating hair loss is not only about addressing the physical symptoms, but also the psychological effects
- **Empathetic Engagement**
 - Clinicians, practitioners and hairstylists should approach hair loss consultations with compassion, sensitivity, and holistic awareness
- **Restorative Confidence through Treatment**
 - Effective treatment options, including exosome-based therapies, offer not just follicular stimulation, but a pathway to emotional recovery and self-confidence
- **Multidisciplinary Approach Recommended**
 - Addressing hair loss may require a combination of dermatological care, nutritional support, and psychosocial counseling
- **Preventative Mental Health Considerations**
 - Early intervention can help mitigate mental health risks and preserve emotional wellbeing

CANCER PATIENTS

EXO-GROW COLLECTION™

A Deeper Emotional Impact

- Hair loss can be especially traumatic for cancer patients, affecting self-image
- Addressing these emotional effects is essential for holistic, patient-centered care

More Than a Physical Change

- Many patients find hair loss more distressing than surgery or other treatments
- It often leads to feelings of loss, incompleteness, and a diminished sense of identity

Limited and Unreliable Solutions

- Current options are often limited to ill-fitting wigs or unverified topical treatments
- Hair regrowth, when it occurs, may not fully restore original texture or density

The Role of Aesthetic Support

- Finding the right emotional and aesthetic support is crucial during this transition
- The beauty industry can play a positive, empowering role in helping individuals feel whole again

REGAIN CONFIDENCE

EXO-GROW COLLECTION™

Empowering Through Education

- Educating individuals about hair loss treatments is vital to restoring confidence, well-being, and a positive self-image
- Awareness reduces emotional distress and helps dispel myths surrounding hair loss

Open, Honest Conversations

- Supportive discussions should separate fact from fiction, avoiding false promises
- Providing realistic expectations builds trust and encourages long-term commitment to care

A Personalised, Compassionate Approach

- Every hair loss journey is unique and requires a personalised treatment timeline
- A compassionate, hand-holding approach helps individuals emotionally navigate their experience

A Path Toward Restoration

- Many are unaware that baldness can often be treated with today's advancements
- The right care plan can guide individuals toward effective hair and scalp restoration

A high-contrast, black and white close-up photograph of a woman's face. Her eyes are looking directly at the camera, and her blonde hair is slightly tousled, framing her face. The lighting is soft, highlighting the texture of her skin and hair.

EXOSOMES

EXO-GROW COLLECTION™

EXOSOMES

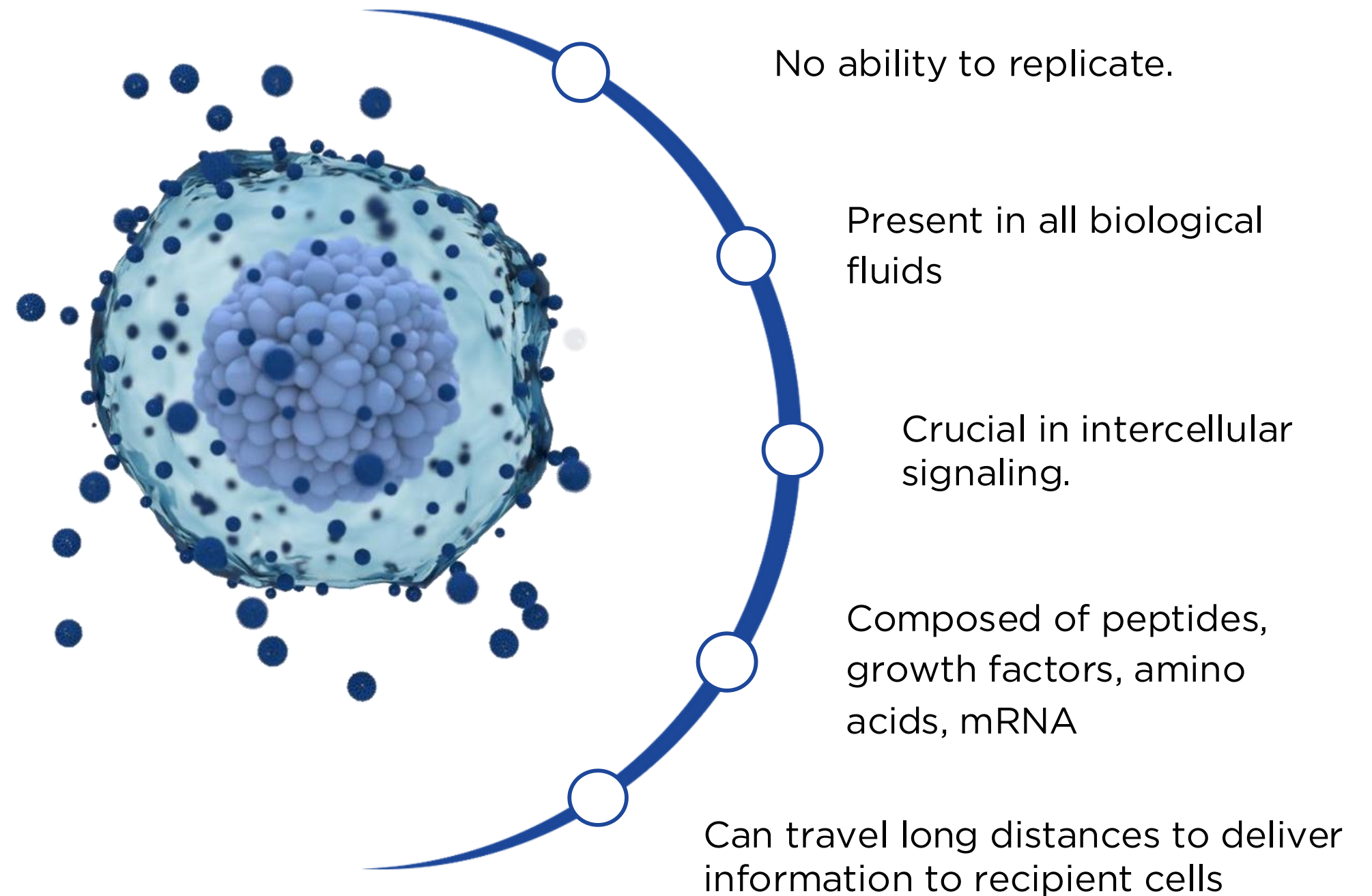
EXO-GROW COLLECTION™

What Are Exosomes?

- Nano-sized extracellular vesicles secreted by various cell types
- Acellular and DNA-free, acting as intercellular messengers
- Carry proteins, lipids, and RNA to influence target cells

Purpose in Hair Regrowth

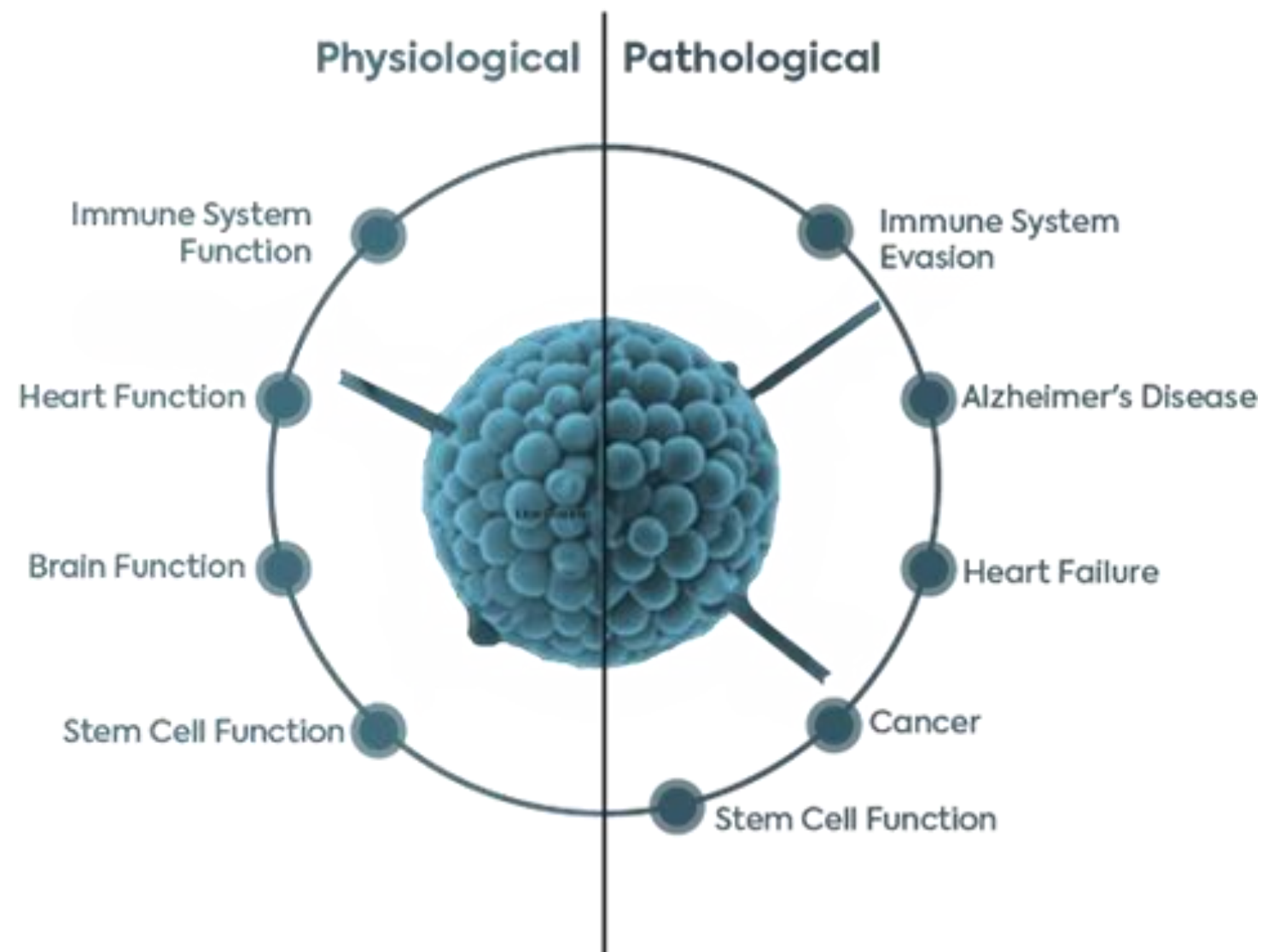
- Exosomes deliver bioactive signals to stimulate hair follicle activity, reduce inflammation, and support tissue regeneration—making them ideal for advanced combination therapies.



FUNCTION OF EXOSOMES

EXO-GROW COLLECTION™

Exosome Functions



Exosomes: The Body's Biological Messengers Analogy

Exosomes are like small encrypted packets of critical information, traveling through the body's biological intranet, securely delivering instructions that influence cell behavior and function.

What They Deliver

- Proteins
- Lipids
- mRNA & microRNA
- Growth and repair signals

Impact

These intelligent messengers reprogram target cells, promoting regeneration, repair, and restoration—key to modern aesthetic and medical therapies.

DERMAPENWORLD EXOSOMES

EXO-GROW COLLECTION™

Reverse-Engineered for Precision

Isolated and categorised key regenerative elements:

- Proteins
- Growth Factors
- Messenger & microRNAs
- Amino Acids
- Antioxidants & Enzymes

Exosomes: Pure Cellular Communication

- Exosomes are not cells and are not connected to the cell nucleus
- They do not contain, carry, or alter DNA
- They act as direct messengers, transferring proteins, growth factors, and RNA between cells
- Enable regeneration and repair without genetic modification

Safe. Non-genetic. Bioactive.

Exosomes deliver powerful signals — without changing who you are at the cellular level.

DP DERMACEUTICALS™ EXOSOMES

EXO-GROW COLLECTION™

Dp Dermaceuticals™ EXOSOME Core Technology

Origin & Purity

- Derived from the youngest, most potent amniotic fluid-based mesenchymal fetal stem cells
- Patented Immune Tolerance Technology – World-exclusive
- Accredited by:
 - ✓ Korean Government
 - ✓ Japanese FDA

Award-Winning Innovation

- Winner of the “New Excellence Technology (NET)” Award
- Awarded 4 times by the Korean Science Minister
(Considered the Korean equivalent of the Nobel Prize)



THE BIOMIMETIC SYNTHETIC PROCESS

EXO-GROW COLLECTION™

What's Inside a Biomimetic Exosome?

- **Peptides & Proteins:** Broken down into amino acid chains to form functional cell-signaling units
- **Ribonucleic Acids (RNA):** Act as messengers, recognised by ribosomes within human cells, facilitating functional uptake
- **Nucleic Acids:**
 - Comprised of nucleotides, polynucleotides, phosphates, and sugars
 - These are often referred to as PDRN (polydeoxyribonucleotides) — synthetically replicated for human cell compatibility

Why This Matters

- True Exosome Therapy: Mimics the natural regenerative effect of human exosomes without using human tissue
- Human-Compatible RNA Blueprint: Ensures cellular recognition and response
- No DNA, No Cells, No Risk: Eliminates complications from traditional stem cell or PRP therapies

A high-contrast, black and white close-up photograph of a woman's face. Her eyes are looking directly at the camera, and her hair is blonde and slightly tousled. The lighting is dramatic, highlighting the texture of her skin and hair.

PATENTED TECHNOLOGY

EXO-GROW COLLECTION™

DERMAPENWORLD PATENT

EXO-GROW COLLECTION™

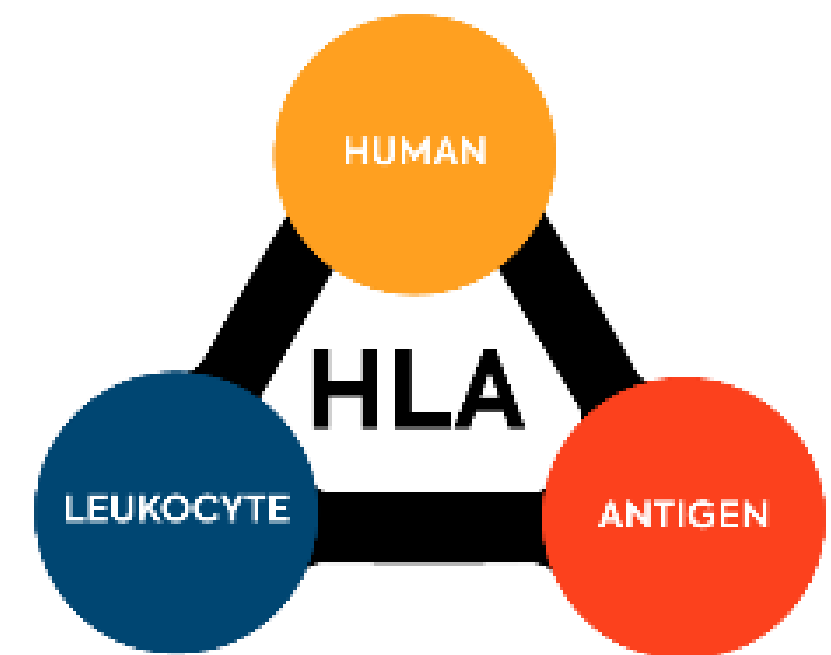
RNA plays a critical role in exosomes by carrying genetic instructions to recipient cells. RNA is essential for protein synthesis within cells, converting genetic information into amino acids using ribosomes. Human - Leukocyte - Antigen HLA

Synthetic Exosome Production:

- Through advanced biomimetic techniques, scientists can create synthetic exosomes that mimic natural exosomes
- These are composed of peptides, proteins, and RNA, and are designed to specifically target skin and hair regeneration
- The proprietary manufacturing process includes careful selection, filtration, and validation of synthetic exosomes using electron microscopy

HLA-G Component:

Patented by DermapenWorld™, this technology prevents the body from rejecting synthetic exosomes, overcoming the natural plateauing effect observed in prolonged use.



IMMUNE TOLLERANT EXOSOMES

EXO-GROW COLLECTION™

Patented Exosome Technology – HLA-G ComplexA

- With HLA-G attached, immune-tolerant biomimetic exosomes deliver PDRN and growth factors directly to cells, helping them heal and regenerate tissue naturally. This opens up new possibilities in personalised medicine and beauty.
- DermapenWorld™ exosomes provide a better answer in the market for exosome therapy, mainly because of their human-derived origin, which delivers numerous special advantages.

Immune Tolerance

- DermapenWorld created a human recognisable sequence that is completely biomimetically synthesised exosomes that are a true exosome, with NO human component

DERMAPENWORLD EXOSOMES

EXO-GROW COLLECTION™

Safety & Purity

- No DNA or negative surface markers
- Noapoptotic bodies
- No granuloma or vascular occlusion risk
- Free of enviromental contaminants

Storage Advantages

- Room Temperature stable
- No refrigeration required

Clinical Benefit

Highly controlled consistent and safe delivery of regenerative signals with minimal risk and maximum conveyence.



EXOSOMES AND HAIR

EXO-GROW COLLECTION™

To maintain normal hair life span, cells between dermal papilla and matrix cell AND surrounding cells communicate repeatedly by cell signaling, cross talk.

Anogen – Growth phase

- Categorised as the actively growing phase and lasts for approximately 2–7 years

Catagen Phase - Transitional phase

- The hair enters the transitory phase lasting a week or two
- The lower part is destroyed and the dermal papilla breaks away

Telogen – Resting phase

- This is the resting phase of approximately 3 months at the end of each hair's life cycle
- The hair either falls out, brushed out or pushed out by a new hair starting its new life
- At the end of this phase the follicle re-enters the anagen phase

Exosomes work by keeping the hair in the growth phase for longer. During this time, all the growth factors are able to work and support growth. There are studies showing that it actually grows longer, denser and thicker as well. There is emerging evidence that the new hair can be darker.



EXO-GROW™

A high-contrast, black and white close-up photograph of a woman's face. Her eyes are looking directly at the camera, and her hair is blonde and slightly tousled. The lighting is dramatic, highlighting the texture of her skin and hair.

INGREDIENTS

EXO-GROW COLLECTION™

EXO-GROW COLLECTION

EXO-GROW COLLECTION™



No Toxic
Chemicals



No Artificial
Fragrance



Functional
Cosmetics
by KFDA
(Hair loss Improvement)



No SLS,
SLES



No Sulfates



No Silicones
& Parabens



Dermatologist
Tested



Compatible with
Microneedling

EXO-GROW COMPLEXA

EXO-GROW COLLECTION™

COMPLEXA OF 17 AMINO ACIDS

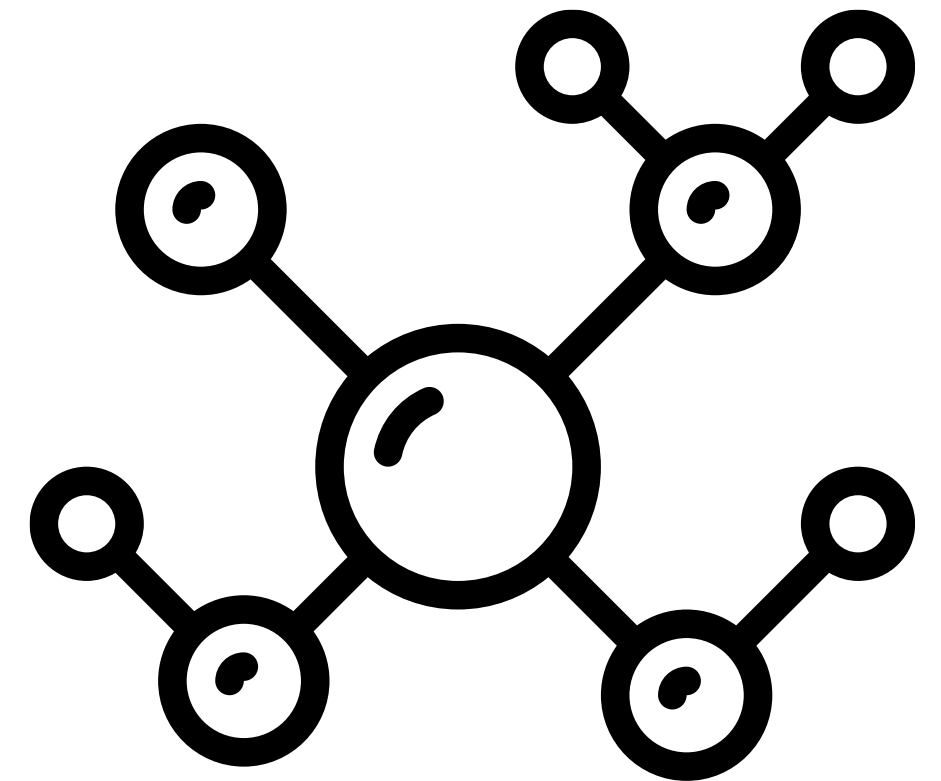
Rebuilding Hair from the Inside Out

- Amino acids form a major part of hair's natural structure
- Chemical and environmental damage can deplete essential proteins
- Topical application helps restore strength, condition, and structural integrity
- Supports hair repair, growth, and resilience

23-INGREDIENT PLANT COMPLEXA

Botanical Power for Scalp & Hair Vitality

- Rich in antioxidant and antibacterial properties
- Delivers nutrition and hydration to the scalp
- Helps prevent thinning, dryness, and split ends
- Eucalyptus clears debris and impurities
- Portulaca Oleracea Extract soothes irritation and boosts moisture
- Leaves the scalp calm, refreshed, and clean



EXO-GROW COMPLEXA

EXO-GROW COLLECTION™

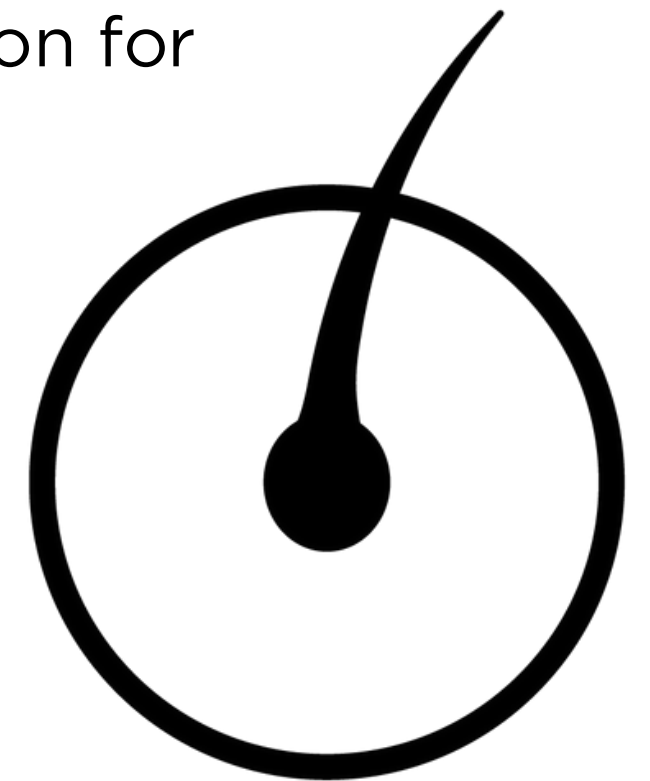
EXO-GROW 23 Plant Extracts

Plant Extracts Included:

- | | |
|-------------------|------------------|
| 1. Aloe Vera | 13. Thyme |
| 2. Chamomile | 14. Echinacea |
| 3. Green Tea | 15. Arnica |
| 4. Ginseng | 16. Marigold |
| 5. Peppermint | 17. Jojoba |
| 6. Saw Palmetto | 18. Wheat Germ |
| 7. Rosemary | 19. Olive Leaf |
| 8. Lavender | 20. Burdock Root |
| 9. Horsetail | 21. Lemon Balm |
| 10. Nettle | 22. Eucalyptus |
| 11. Bamboo | 23. Calendula |
| 12. Ginkgo Biloba | |

Benefits

- Promotes hair strength, growth, and scalp balance
- Delivers antioxidant, anti-inflammatory, and nutrient-rich support
- A complete botanical solution for healthy, resilient hair



A high-contrast, black and white close-up photograph of a woman's face. Her eyes are looking directly at the camera, and her hair is blonde and slightly tousled. The lighting is dramatic, highlighting the texture of her skin and hair.

THE SCALP

EXO-GROW COLLECTION™

HAIR LOSS – MAIN CAUSES

EXO-GROW COLLECTION™

Male Pattern Baldness (Androgenetic Alopecia)

- Genetic condition causing gradual hair loss
- Affects temples and crown
- Caused by DHT (Dihydrotestosterone), which impacts hair follicle

Female Pattern Baldness (Androgenetic Alopecia)

- Diffuse thinning across the scalp, often along the part line
- Linked to hormonal fluctuations (pregnancy, menopause) and genetics

Hypothyroidism

- Underactive thyroid leads to hair thinning and slow growth
- Associated with hormonal imbalances and symptoms like fatigue

Alopecia (General)

- Alopecia Areata: Autoimmune condition causing patchy hair loss
- Alopecia Totalis/Universalis: Total hair loss on the scalp or entire body

HAIR LOSS – MAIN CAUSES

EXO-GROW COLLECTION™

Factors Contributing to Hair Loss

Medication

- Certain drugs, such as chemotherapy, blood thinners, and antidepressants, can cause hair loss as a side effect

Physical Stress

- Physical trauma, illness, or surgery can trigger temporary hair shedding (telogen effluvium)

Emotional Stress

- High levels of emotional stress can disrupt hair growth cycles, leading to hair thinning or shedding

Shock

- Telogen effluvium caused by shock or traumatic events can result in sudden hair loss

Chemical Treatments (Chemo)

- Chemotherapy and strong chemical treatments weaken hair, leading to hair loss or thinning

THE RESULTS

EXO-GROW COLLECTION™

EXO-GROW BEFORE & AFTER

EXO-GROW COLLECTION™





EXO-GROW™

Regain. Retain. Maintain.

**YOU
WILL
BELIEVE**



EXO-GROW™